

0488CG Walk-In Push Bar Inside Release with 7888 Double Latch

Part Number: 10488CG*

CAUTION

DO NOT LOCK THE LATCH BEFORE CLOSING. THE DOOR LATCH COULD BECOME DAMAGED.

WARNING

ENTRAPMENT AND FREEZE HAZARD

For safe operation, only use with Kason model 7888 Double Latch. See latch instructions for more details.

Failure to follow the installation and testing procedures may result in personnel being entrapped and subject to extreme cold, freezing temperature and possibly death. See page 2 for testing procedures.

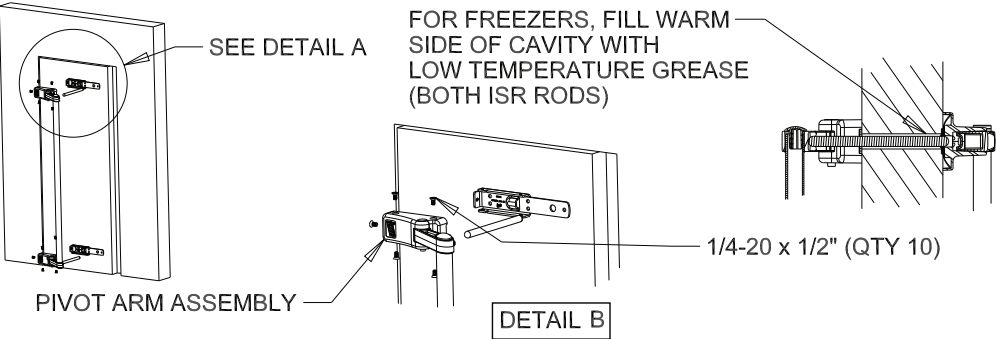
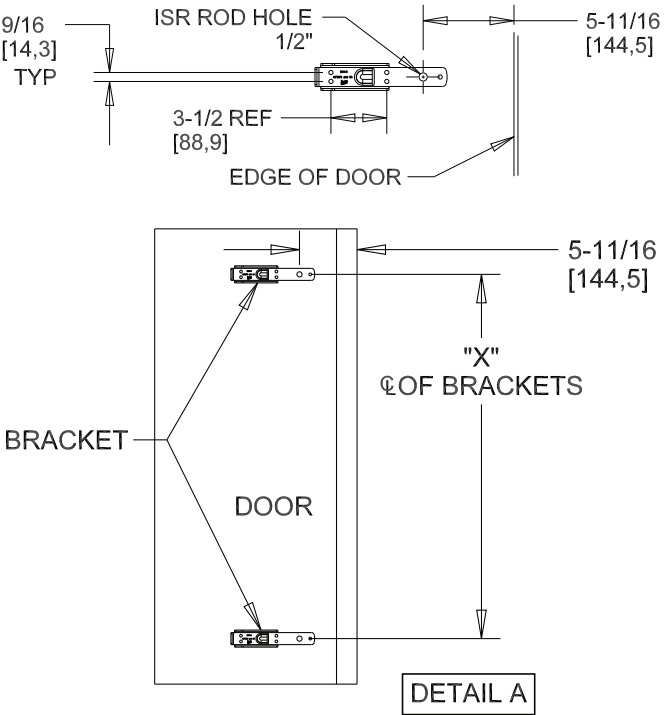
△ Notice: See instructions for the 7888 and install the Latch set before installing the inside release. **Note:** The Panic Bar requires adequate structural support appropriate for attaching components with 1/4" stainless steel bolts/screws (not included)."

DIRECTIONS

1. With door placed on work table set bracket in position to align inside release rod hole with same hole on outside latch (Ref. IS-7888). Align bracket so that it is square on the door. Mark and center punch (5) holes.
2. Align second bracket with other inside release rod hole, align bracket so that it is square and level on the door and square to first bracket. Mark and center punch (5) holes.
3. Drill (10) holes, sized appropriately for self threading structural 1/4-20 screws, or tap for 1/4-20 type bolts.
4. Install both brackets with 1/4-20 hardware (not included) to make sure brackets are square to each other and to the door. Fit pivot arm assembly.
5. Secure pivot arm assembly with hardware provided.

| Push Bar ISR* | Latch | Door Thickness | Rod Length | DIM "X" |
|----------------|-------|----------------|------------|---------|
| 10488CG0317400 | 7888 | 4" | 8" | 30" |
| 10488CG0318400 | 7888 | 4" | 8" | 36" |
| 10488CG0319400 | 7888 | 4" | 8" | 50" |

Additional models available upon request. See "Detail A" for DIM "X".



0488CG Walk-In Push Bar Inside Release with 7888 Double Latch

Part Number: 10488CG*

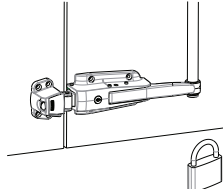
CAUTION



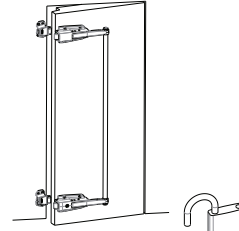
DO NOT LOCK THE LATCH BEFORE CLOSING.
THE DOOR LATCH COULD BECOME DAMAGED.



1. CLOSE DOOR



2. LOCK LATCH



3. UNLOCK LATCH
4. OPEN DOOR
5. LEAVE THE LATCH UNLOCKED

WARNING

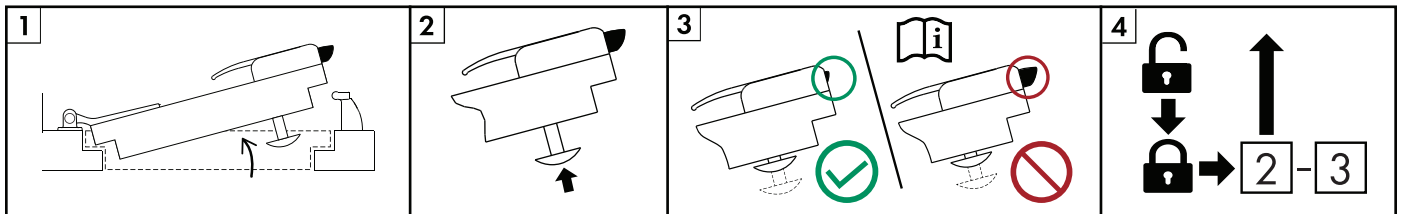


ENTRAPMENT AND FREEZE HAZARD

Failure to follow the installation and testing procedures may result in personnel being entrapped and subject to extreme cold, freezing temperatures, and possibly death.

Affix the safety decal, that came with the latch, to the door near the latch or the inside release.

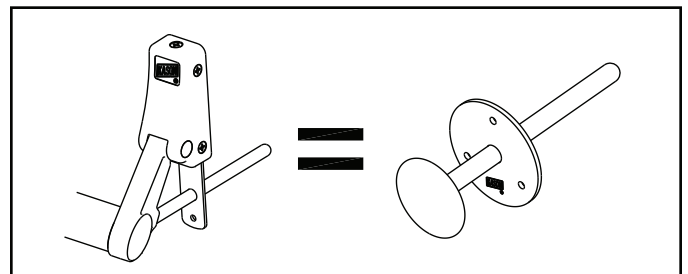
The door hardware includes a SafeGuard® latch, which is designed with an inside release that will operate the latch to open the door from the inside, when the latch has been locked on the outside. Extreme or harsh use conditions of the latch, inside release or walk-in door, may damage or impair function of the latch. For this reason, it is important to inspect and test the function of the latch and inside release daily before entering the walk-in. Should the latch or inside release fail to release the latch and allow door to open from the inside, do not enter the walk-in and report the problem to management so that the door, latch or inside release may be serviced by a professional.



TESTING PROCEDURE

1. Open the door.
2. With the door open, push to depress the inside release knob (or push bar).
3. (A) If the latch tongue retracts substantially into the latch with the release knob depressed, the latch and inside release are functioning properly.
3. (B) If the latch tongue does not retract substantially into the latch, do not enter the walk-in, and notify management to have the door serviced.
4. Lock the door using key cylinder and/or padlock and repeat steps 2 and 3.

Note: After passing the step 4 test with latch locked, unlock the latch and continue with normal use of the door.



Note: Actual latch or inside release provided with the door may look different than those shown in testing diagram above. Refer to instructions and safety decal provided with your latch.